

PB 12" CENTRAL
 WITH DRY
 CLEANING SYSTEM



VIA BELGIO, 22 Z.I. - 35127 PADOVA - ITALY

Ph. +39 049 8700307 - Fax +39 049 8700605

e-mail: vacuum@lindhaus.it - www.lindhaus.it

Cod.Fiscale - P.IVA - Reg.Imp.PD 02151740285

Capitale Sociale 46.800,00 i.v.

LINDHAUS U.S.A.

P.O. BOX 159 / 12941 EAGLE CREEK PARKWAY
SAVAGE, MN 55378

www.lindhaususa.com

www.lindhaus.net

info@lindhaus.com

1-800-498-7526 / 952-707-1131

FAX: 952-707-1134

PARTS LIST

EFFECTIVE FROM

DATE

PAGE

1/2

PB12" / PB14" - CORDED POWER BRUSH WITH DEEP CLEANING SYSTEM

MODEL: PB12e (PART #097582280) / PB14e (PART #094053680)

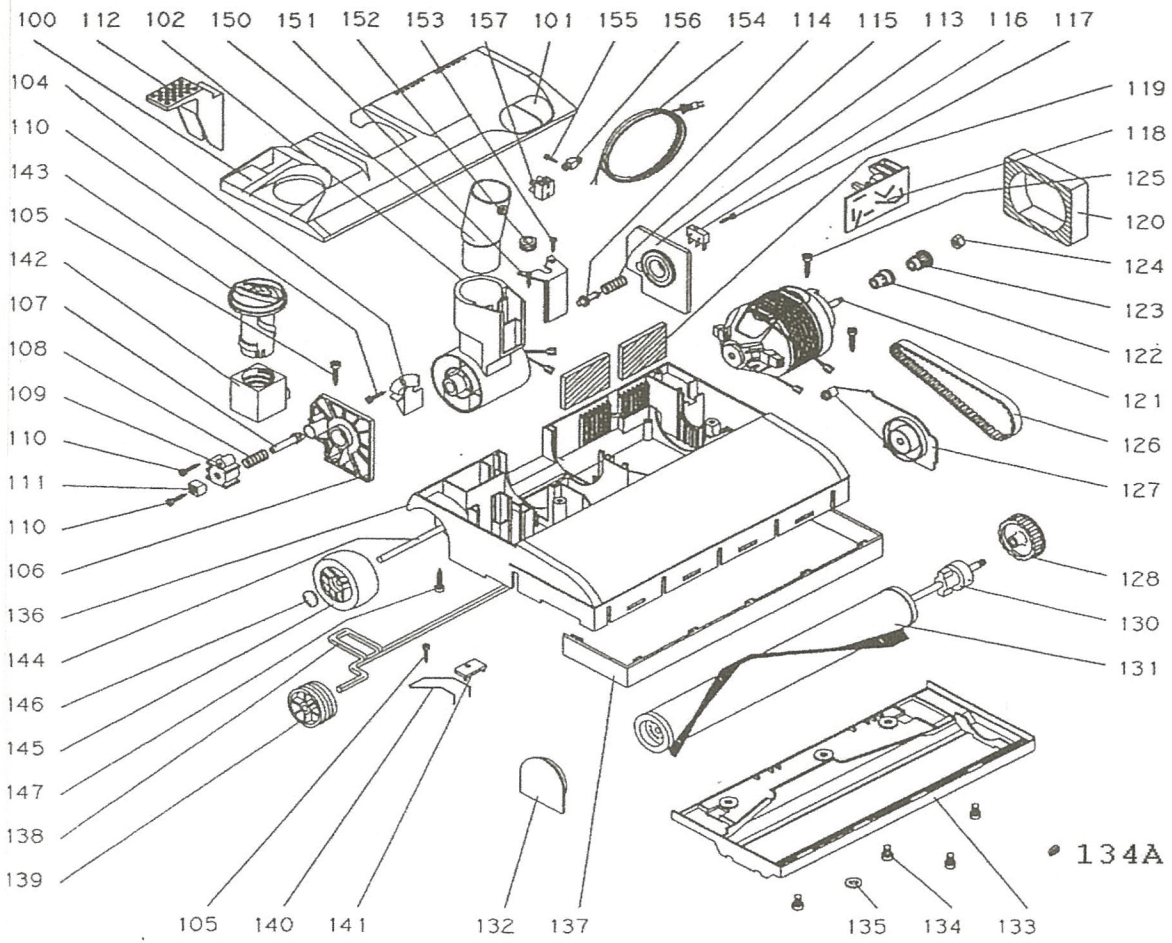
Pos	Part Number	Description
100_	,083960281	BASE HOUSING COVER LIGHT GREY
100A_	,085150081	THROAT COVER WITH SPRING, FELT STRIP
100B_	,011000017	THROAT COVER FELT STRIP [ONLY]
101	,083950081	LENS SET RED AND GREEN
102	,088720380	JOINT COMPLETE WITH CORD (D.32mm 1-1/4")
104	002280305	JOINT PIN SLIDE
105	085590009A	SCREW 3.9x13 (SINGLE)
106	080430381	RIGHT CONNECTOR SUPPORT
107	000840036	PLUNGER
108	010390009	SPRING, DÉTENTE
109	000650036	BUSHING
110	085610009A	SCREW 2.9x16 (SINGLE)
111	000970305	SLIDE
112	001920105	FOOT PEDAL DARK GRAY
113	080440381	SUPPORT LEFT JOINT
114	000670036	SWITCH ACTIVATOR PIN
115	010480009	SPRING SWITCH ACTIVATOR PIN
116	020640000	MICROSWITCH
117	086950009A	SCREW 2.2x16 (SINGLE)
118_	,020610000	CIRCUIT BOARD M30 (12") V.120 W.180
118_	020370000	CIRCUIT BOARD M38 (14") 100/120V W.170
119	010720316	EXHAUST FILTER
120	010580016	FILTER BRUSH MOTOR
121_	050030080	BRUSH MOTOR R73/25V 120V 180W (12"-14")
121A_	021260000	CARBON BRUSH FOR BRUSH MOTOR R73 (SET OF TWO)
121B_	,015210009	NUT M5, BRUSH MOTOR
122	,002890029	METAL SPACER
123	,002880029	METAL PULLEY
124	,010490009	NUT, PINION
125	085560009A	SCREW 3.9x16 (SINGLE)
126	010790300	TIMING BELT 7mm
127	,080360011	TRANSMISSION LEFT SUPPORT WITH BEARINGS
128	,086160381	BRUSH PULLEY WITH METAL INSERT
130_	,080880081	BRUSH SHAFT M30 (12")
130_	,080890081	BRUSH SHAFT M38 (14")
131_	,081710301	BRUSH ROLLER M30 (12") 1 BRISTLE [STANDARD]
131_	,081730301	BRUSH ROLLER M30 (12") 2 BRISTLE
131_	,080620301	BRUSH ROLLER M38 (14") 1 BRISTLE [STANDARD]
132	,080370011	RIGHT BRUSH SUPPORT WITH BEARING

133_	005860333	BRUSH SHOE PLATE M30 (12")
133_	005870333	BRUSH SHOE PLATE M38 (14")
134	087491381A	ROLLER COVER CLIP (SINGLE)
135	085540009A	SCREW 3.5x9.5 TG (SINGLE)
136_	,087560281	BASE HOUSING M30 (12") LIGHT GREY WITH CLIPS
136_	181664681	BASE HOUSING M38 (14") LIGHT GREY WITH CLIPS
137_	,000600212	BUMPER M30 (12") LIGHT GREY
137_	000590112	BUMPER M38 (14") DARK GRAY
138	011320029	FRONT AXLE
139	002260000	FRONT WHEEL RUBBER
140	010430009	SPRING
141	000680036	SPRING STOP PLATE
142	000990305	BRUSH HEIGHT ADJUSTER
143	003750104	ADJUSTING KNOB DARK GREY
144	011380009	REAR AXLE
145	002270000	REAR BIG WHEEL RUBBER
146	012840009	WHEEL RETAINER CAP
147	086440009A	SCREW 3.5x19 (SINGLE)
150	,002790305	SWIVEL CONNECTOR (D.32mm 1-1/4")
151	,001080305	STOPCORD BRACKET
152	,011620307	STRAIN RELIEF
153	,085610009A	SCREW 2.9x16 (SINGLE)
154	,021190320	CORD, POWER 45"
155	,087420009A	SCREW 2.9x9.5 (SINGLE)
156	,001100305	CORD CLAMP
157	,021000400	TERMINAL BLOCK 2 POLES

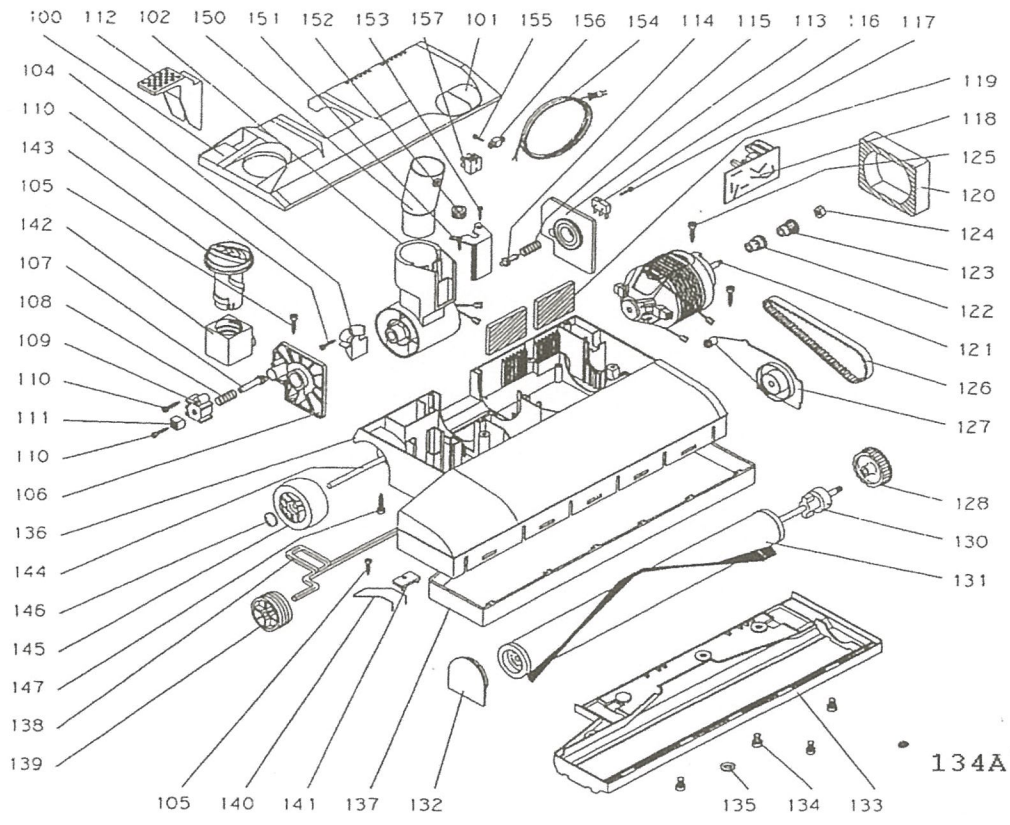
_003243001	DCS (DEEP CLEANING SYSTEM) CONVERTER
MISC-WANDCV	TELESCOPIC WAND, CENTRAL VACUUM

ENCAPSULATION IS LOW MOISTURE CARPET CLEANING METHOD / USE POWER BRUSH WITH DCS CONVERTER

CHE-7000	PURE POWER / OXY-GEN - 12 QUARTS (ENCAPSULATION CARPET CLEANER)
MIS-7200	2 LITER – ALL ANGLE SPRAYER BOTTLE (DILUTE / APPLY CLEANERS)



PB 12" CENTRAL
 WITHOUT DRY CLEANING
 SYSTEM



PB 14"
CENTRAL



VIA BELGIO, 22 Z.I. - 35127 PADOVA - ITALY

Ph. +39 049 8700307 - Fax +39 049 8700605

e-mail: vacuum@lindhaus.it - www.lindhaus.it

Cod.Fiscale - P.IVA - Reg.Imp.PD 02151740285

Capitale Sociale 46.800,00 i.v.

LINDHAUS U.S.A.

P.O. BOX 159 / 12941 EAGLE CREEK PARKWAY
SAVAGE, MN 55378

www.lindhaususa.com

www.lindhaus.net

info@lindhaus.com

1-800-498-7526 / 952-707-1131

FAX: 952-707-1134

PARTS LIST

EFFECTIVE FROM

DATE

PAGE

1/2

PB12" / PB14" - CORDED POWER BRUSH

MODEL: PB12e / PB14e

Pos	Part Number	Description
100_	,083960281	MOTOR COVER LIGHT GREY
100A_	,085150081	THROAT COVER WITH SPRING, FELT STRIP
100B_	,011000017	THROAT COVER FELT STRIP [ONLY]
101	,083950081	LENS SET RED AND GREEN
102	,088720380	JOINT COMPLETE WITH CORD (D.32mm 1-1/4")
104	,002280305	JOINT PIN SLIDE
105	085590009A	SCREW 3.9x13 (SINGLE)
106	080430381	RIGHT CONNECTOR SUPPORT
107	000840036	PLUNGER
108	010390009	SPRING, DÉTENTE
109	000650036	BUSHING
110	085610009A	SCREW 2.9x16 (SINGLE)
111	000970305	SLIDE
112	,001920105	FOOT PEDAL DARK GRAY
113	080440381	SUPPORT LEFT JOINT
114	000670036	SWITCH ACTIVATOR PIN
115	010480009	SPRING SWITCH ACTIVATOR PIN
116	020640000	MICROSWITCH
117	086950009A	SCREW 2.2x16 (SINGLE)
118_	,020610000	CIRCUIT BOARD M30 (12") V.120 W.180
118_	020370000	CIRCUIT BOARD M38 (14") 100/120V W.170
119	010720316	EXHAUST FILTER
120	010580016	FILTER BRUSH MOTOR
121_	050030080	BRUSH MOTOR R73/25V 120V 180W (12"-14")
121A_	021260000	CARBON BRUSH FOR BRUSH MOTOR R73 (SET OF TWO)
121B_	,015210009	NUT M5, BRUSH MOTOR
122	,002890029	METAL SPACER
123	,002880029	METAL PULLEY
124_	,010340009	NUT M6
124_	,010490009	NUT, PINION
125	085560009A	SCREW 3.9x16 (SINGLE)
126	010790300	TIMING BELT 7mm
127	,080360011	TRANSMISSION LEFT SUPPORT WITH BEARINGS
128	,086160381	BRUSH PULLEY WITH METAL INSERT
129	,010340009	NUT, M6 BRUSH PULLEY (ONLY)
130_	,080880081	BRUSH SHAFT M30 (12")
130_	,080890081	BRUSH SHAFT M38 (14")
131_	,081730301	BRUSH ROLLER M30 (12") 2 BRISTLE [STANDARD]
131_	,081710301	BRUSH ROLLER M30 (12") 1 BRISTLE

131_	,080620301	BRUSH ROLLER M38 (14") 1 BRISTLE [STANDARD]
132	,080370011	RIGHT BRUSH SUPPORT WITH BEARINGS
133_	,000570325	BRUSH SHOE PLATE M30 (12")
133_	,000560325	BRUSH SHOE PLATE M38 (14")
134	,010360009	SCREW M6x9
135	,011640009	STAR WASHER
136_	,080470281	BASE HOUSING LIGHT GREY M30 (12")
136_	,080450281	BASE HOUSING LIGHT GREY M38 (14")
136A_	,010670014	GROMMET, BRASS (SCREW THREADS)
137_	,000600112	BUMPER M30 (12") DARK GREY
137_	000590112	BUMPER M38 (14") DARK GRAY
138	011320029	FRONT AXLE
139	002260000	FRONT WHEEL RUBBER
140	010430009	SPRING
141	000680036	SPRING STOP PLATE
142	000990305	BRUSH HEIGHT ADJUSTER
143_	,00069104	ADJUSTING KNOB DARK GREY (OLD)
143_	,003750104	ADJUSTING KNOB DARK GREY
144	011380009	REAR AXLE
145	002270000	REAR BIG WHEEL RUBBER
146	012840009	WHEEL RETAINER CAP
147	086440009A	SCREW 3.5x19 (SINGLE)
150	,002790305	SWIVEL CONNECTOR (D.32mm 1-1/4")
151	,001080305	STOPCORD BRACKET
152	,011620307	STRAIN RELIEF
153	,085610009A	SCREW 2.9x16 (SINGLE)
154	,021190320	CORD, POWER 45"
155	,087420009A	SCREW 2.9x9.5 (SINGLE)
156	,001100305	CORD CLAMP
157	,021000400	TERMINAL BLOCK 2 POLES

MISC-WANDCV TELESCOPIC WAND, CENTRAL VACUUM