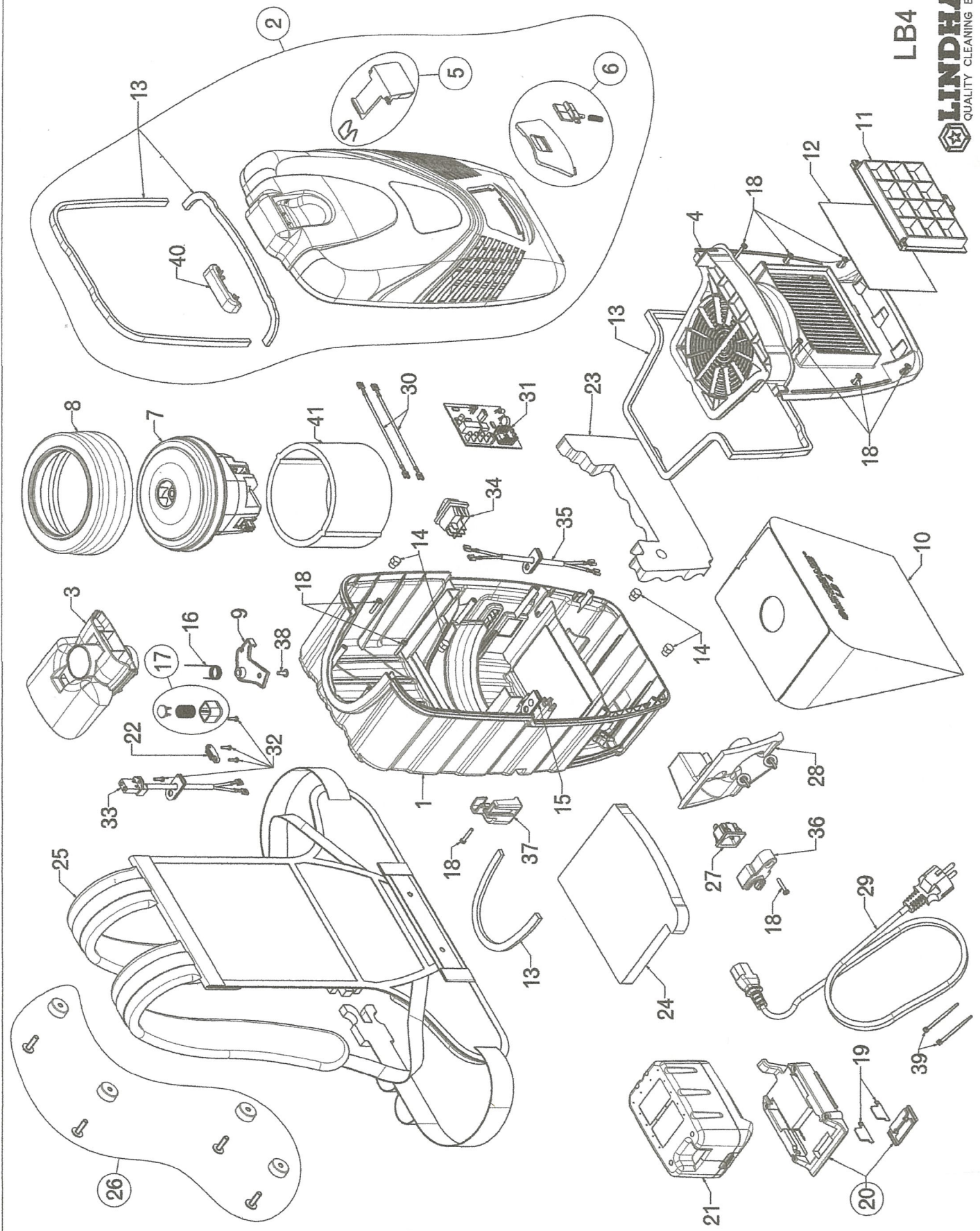


LB4





VIA BELGIO, 22 Z.I. - 35127 PADOVA - ITALY

Ph. +39 049 8700307 - Fax +39 049 8700605

e-mail: vacuum@lindhaus.it - www.lindhaus.it

Cod.Fiscale - P.IVA - Reg.Imp.PD 02151740285

Capitale Sociale 46.800,00 i.v.

**LINDHAUS U.S.A.**

P.O. BOX 159 / 12941 EAGLE CREEK PARKWAY  
SAVAGE, MN 55378

[www.lindhaususa.com](http://www.lindhaususa.com)

[www.lindhaus.net](http://www.lindhaus.net)

[info@lindhaus.com](mailto:info@lindhaus.com)

1-800-498-7526 / 952-707-1131

FAX: 952-707-1134

**PARTS LIST**

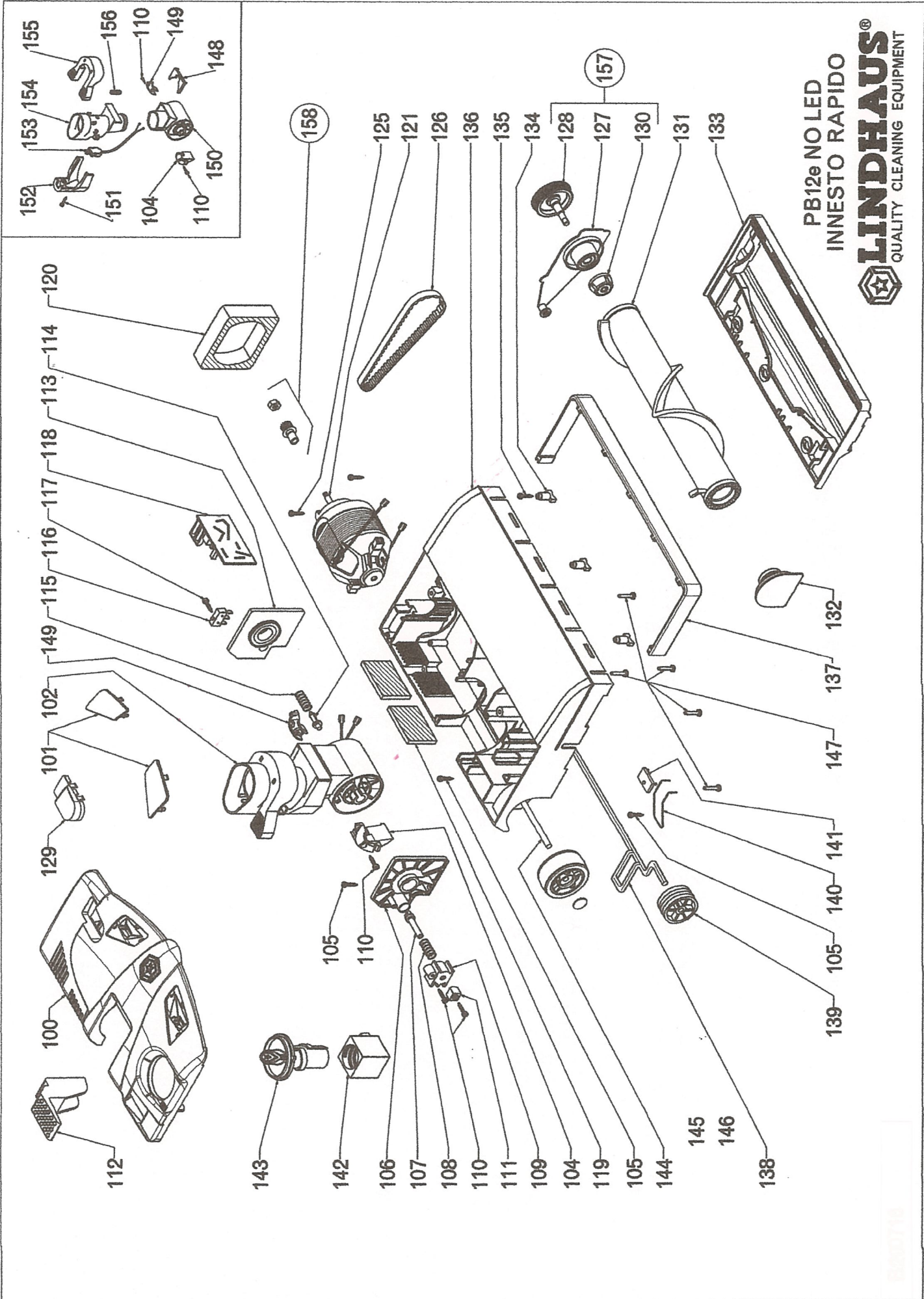
EFFECTIVE FROM                      DATE                      PAGE  
**01/01/2018**                      **01/01/2018**                      **1/2**

**LB4 L-ION / LB4 ELECTRIC - BODY**

**MODEL: 221128 (LB4 L-ION) / 231126 (LB4 ELECTRIC)**

Pos	Part Number	Description
1	182821281	BAG HOUSING
2_	182834681	BAG COVER COMPLETE (LB4 L-ION)
2_	182844681	BAG COVER COMPLETE (LB4 ELECTRIC)
3_	100973801	HANDLE (LB4 L-ION)
3_	100983801	HANDLE (LB4 ELECTRIC)
4	182851281	MOTOR HOUSING COVER
5	182863881	BAG DOOR LATCH KIT (2 PCS)
6	182874681	BLOWER DOOR KIT (1 PC)
7_	,051800081	VACUUM MOTOR R139/20 APS V.36/DC W.400 (LB4 L-ION)
7_	,051850081	VACUUM MOTOR R139APS V.120/60 W.750 (LB4 ELECTRIC)
8	,013630300	GASKET MOTOR
9	100961304	SAFETY LATCH
10	,032580081	LB4 VACUUM BAG (8 BAGS + 2 MICROFILTERS + 1 MOTOR PROTECT FILTER)
11	,003360100	EXHAUST GRILL
12_	085350081	EXHAUST MICROFILTER (12 PACK) [HF6/VAL/HCP/RX/CHP/ACT/DYN/DIA/LB4]
12_	030640000	HEPA FILTER
12_	,030650000	CARBON ACTIVE EXHAUST FILTER
13	182890081	GASKET (3 MT.)
14	182900009A	INSERT M6 (SINGLE)
15	182910081A	STRAIN RELIEF (SINGLE)
16	182920009A	SPRING SAFETY LATCH (SINGLE)
17	182930081	VALVE KIT (LB4 ELECTRIC)
18	,087250009A	SCREW 3.5x22 (SINGLE)
19	182300000A	CONTACTS L-ION BATTERY (SINGLE) (LB4 L-ION)
20	182944680	BATTERY SUPPORT KIT (LB4 L-ION) (2 PCS)
21	,025350000	BATTERY, L-ION V.36 DC 6.0 Ah (LB4 L-ION)
22	182950380	CORD CLAMP (SINGLE)
23	,015660016	FILTER MOTOR
24	,015650316	FILTER MOTOR PROTECTION
25_	,032590000	BACK PACK HARNESS KIT (1 PC)
25A_	101350000	CLIP, BACK PACK HARNESS
26	182960081A	SCREW M6x20 TG + SPACER (SINGLE)
27	,025240300	POWER INLET CONNECTOR BLACK 3 WAY (LB4 ELECTRIC)
28	182971281	PLUG SUPPORT PLATE
29	024180020	CORD 3x18 12.5 MT. USA PLUG YELLOW (3 PRONG / 49.2 FT)
30_	182980028	WIRES KIT (LB4 L-ION)
30_	182990028	WIRES KIT (LB4 ELECTRIC) V.120
31	,025560000	CIRCUIT BOARD V.36 DC (LB4 L-ION)
32	085610009A	SCREW 2.9x16 (SINGLE)

33	183000028	PLUG / CABLE KIT (LB4 ELECTRIC)
34	,023610000	MAIN SWITCH
35_	,025460028	WIRE KIT BATTERY SWITCH (LB4 L-ION)
35_	,025520320	WIRE KIT PLUG SWITCH (LB4 ELECTRIC) V.120
36	101081201	PLUG RETAINER
37	101071233	BRUSH SUPPORT
38	086450009A	SCREW 3.9x13 TG (SINGLE)
39	183010081	STRING (SINGLE)
40	101110101	LATCH RETAINER
41	,015730016	FOAM MOTOR FILTER
	_031260310	CREVICE TOOL (D.32mm 1-1/4")
	_031750310	UPHOLSTERY TOOL WITH CENTER STRIP (D.32mm 1-1/4")
	_030740300	UPHOLSTERY TOOL - CENTER STRIP [ONLY]
	_031270310	ROUND DUSTING BRUSH WITH NATURAL BRISTLES (D.32mm 1-1/4")
	_031110300	UPHOLSTERY TOOL WITH NATURAL BRISTLE [COMPLETE] (D.38mm 1-1/2")
	_030900300	UPHOLSTERY TOOL - NATURAL BRISTLE BRUSH [ONLY]
	_032740300	UNIVERSAL NOZZLE TOOL P30 (12") BLACK - LB4 (D.32mm 1-1/4")
	_086504681	HARD FLOOR TOOL / WHEELED - LB4 (D.32mm 1-1/4") [COMPLETE]
	_005130305	NECK, HARD FLOOR TOOL (D.32mm 1-1/4")
	_015740013	TELESCOPIC WAND - LB4 (STRAIGHT SUCTION)
	_183020081	FLEX HOSE WITH HANDLE - LB4 (STRAIGHT SUCTION)
	_024960000	CHARGER L-ION BATTERY (LB4 L-ION)
	_182790081	WHEELS KIT - LB4 (SET OF 4) [ACCESSORY TO CONVERT INTO CANISTER]
	_182704681	BLOWER PORT ATTACHMENT [ACCESSORY TO CONVERT INTO BLOWER]
		<b><u>ELECTRIC POWER BRUSH HEAD / ATTACHMENTS FOR POWER TEAM (LB4 ELECTRIC ONLY)</u></b>
PB	190813680	PB12"QR / POWER BRUSH REPLACEMENT ECO FORCE [COMPLETE]
PB	190823680	PB14"QR / POWER BRUSH REPLACEMENT ECO FORCE [COMPLETE]
	_181870081	ELECTRIFIED HOSE + WAND KIT (QUICK RELEASE POWER TEAM) (2 PCS)
	_180380381	ELECTRIFIED HOSE (QUICK RELEASE POWER TEAM)
	_031680000	ELECTRIFIED TELESCOPIC WAND (QUICK RELEASE POWER TEAM)
	_023850300	INTERNAL CORD, ELECTRIFIED TELESCOPIC WAND [PART OF ABOVE WAND]





VIA BELGIO, 22 Z.I. - 35127 PADOVA - ITALY

Ph. +39 049 8700307 - Fax +39 049 8700605

e-mail: vacuum@lindhaus.it - www.lindhaus.it

Cod.Fiscale - P.IVA - Reg.Imp.PD 02151740285

Capitale Sociale 46.800,00 i.v.

**LINDHAUS U.S.A.**

P.O. BOX 159 / 12941 EAGLE CREEK PARKWAY  
SAVAGE, MN 55378

[www.lindhaususa.com](http://www.lindhaususa.com)

[www.lindhaus.net](http://www.lindhaus.net)

[info@lindhaus.com](mailto:info@lindhaus.com)

1-800-498-7526 / 952-707-1131

FAX: 952-707-1134

**PARTS LIST**

EFFECTIVE FROM                      DATE                      PAGE  
**01/10/2018**                      **01/10/2018**                      **1/2**

**PB12"QR / PB14"QR ECO FORCE - QUICK RELEASE POWER BRUSH**

**MODEL: PB12e (PART #190813680) / PB14e (PART #190823680)**

Pos	Part Number	Description
100_	181163681	BASE HOUSING COVER WHITE
100A_	,085150081	THROAT COVER WITH SPRING, FELT STRIP
100B_	,011000017	THROAT COVER FELT STRIP [ONLY]
101	181170181	LENS SET LED DARK GREY
102	,087770380	JOINT COMPLETE QUICK RELEASE (D.32mm 1-1/4")
104	,005920305	JOINT PIN SLIDE QUICK RELEASE
105	085590009A	SCREW 3.9x13 (SINGLE)
106	080430381	SUPPORT RIGHT JOINT
107	000840036	PLUNGER
108	010390009	SPRING, DÉTENTE
109	000650036	BUSHING
110	085610009A	SCREW 2.9x16 (SINGLE)
111	000970305	SLIDE
112	001920105	FOOT PEDAL DARK GRAY
113	080440381	SUPPORT LEFT JOINT
114	000670036	SWITCH ACTIVATOR PIN
115	010480009	SPRING SWITCH ACTIVATOR PIN
116	020640000	MICROSWITCH
117	086950009A	SCREW 2.2x16 (SINGLE)
118_	,020610000	CIRCUIT BOARD M30 (12")
118_	020370000	CIRCUIT BOARD M38 (14") 100/120V W.170
119	010720316	EXHAUST FILTER
120	010580016	FILTER BRUSH MOTOR
121_	050030080	BRUSH MOTOR 100/120V (12"-14")
121A_	021260000	CARBON BRUSH FOR BRUSH MOTOR R73 (SET OF TWO)
121B_	,015210009	NUT M5, BRUSH MOTOR
125	085560009A	SCREW 3.9x16 (SINGLE)
126	010790300	TIMING BELT 7mm
127	181570029	TRANSMISSION SUPPORT WITH BEARINGS
128	060290081	PULLEY WITH SHAFT
129	009044146	SIDE LIGHT COVER
130	088620081	DRIVE JOINT BASE
131_	,009590301	BRUSH ROLLER M30 (12") 1 BRISTLE 0,25 BLACK + INSERT [STANDARD]
131_	009610301	BRUSH ROLLER M30 (12") 2 BRISTLE 0,25 BLACK + INSERT
131_	100110101	BRUSH ROLLER M30 (12") 1 BRISTLE WHITE (SOFT BRISTLE) + INSERT
131_	,009600301	BRUSH ROLLER M30 (12") 1 BRISTLE RED (STIFF BRISTLE) + INSERT
131_	009630301	BRUSH ROLLER M38 (14") 1 BRISTLE 0,25 BLACK + INSERT [STANDARD]
131_	,009620301	BRUSH ROLLER M38 (14") 1 BRISTLE WHITE (SOFT BRISTLE) + INSERT
131_	,009640301	BRUSH ROLLER M38 (14") 1 BRISTLE RED (STIFF BRISTLE) + INSERT

131A_	,100370004	INSERT, WHITE (MODIFY BRUSH ROLL TO ECO FORCE)
132_	181670029	ROLLER SUPPORT M30 (12")
132_	181580029	ROLLER SUPPORT M38 (14")
133_	005860333	BRUSH SHOE PLATE M30 (12")
133_	005870333	BRUSH SHOE PLATE M38 (14")
134	087491381A	ROLLER COVER CLIP (SINGLE)
135	085540009A	SCREW 3.5x9.5 TG (SINGLE)
136_	087563681	BASE HOUSING M30 (12") MARBLE WHITE WITH CLIPS
136_	181663681	BASE HOSUING M38 (14") MARBLE WHITE WITH CLIPS
137_	000600112	BUMPER M30 (12") DARK GRAY
137_	000590112	BUMPER M38 (14") DARK GRAY
138	011320029	FRONT AXLE
139	002260000	FRONT WHEEL RUBBER
140	010430009	SPRING (AXLE)
141	000680036	SPRING STOP PLATE
142	000990305	BRUSH HEIGHT ADJUSTER
143	003750104	ADJUSTING KNOB DARK GREY
144	011380009	REAR AXLE
145	002270000	REAR BIG WHEEL RUBBER
146	012840009	WHEEL RETAINER CAP
147	086440009A	SCREW 3.5x19 (SINGLE)
148	,007160305	JOINT COVER QUICK RELEASE
149	,005930305	BLOCKING JOINT QUICK RELEASE
150	,005890305	LOWER JOINT QUICK RELEASE
151	088020009A	SCREW 3.5x13 (SINGLE)
152	,007170305	COVER CABLE JOINT QUICK RELEASE
153	,023320320	CORD, POWER 11.22" QUICK RELEASE
154	,007150305	UPPER JOINT QUICK RELEASE
155	,007180133	FOOT PEDAL JOINT QUICK RELEASE
156	,011070009	SPRING, FOOT PEDAL QUICK RELEASE
157	181590029	TRANSMISSION SUPPORT [COMPLETE]
158	182730081	PINION+NUT COMPLETE
	_003243001	DCS (DEEP CLEANING SYSTEM) CONVERTER
	_031860000	TELESCOPIC ELECTRIC WAND QUICK RELEASE, CENTRAL VACUUM (D.32mm 1-1/4")
MISC-CORD, CVQR NEW		INTERNAL CORD, ELECTRIFIED TELESCOPIC WAND [PART OF ABOVE WAND]

**ENCAPSULATION IS LOW MOISTURE CARPET CLEANING METHOD / USE POWER BRUSH WITH DCS CONVERTER**

CHE-7000	PURE POWER / OXY-GEN - 12 QUARTS (ENCAPSULATION CARPET CLEANER)
MIS-7200	2 LITER – ALL ANGLE SPRAYER BOTTLE (DILUTE / APPLY CLEANERS)