

H PRO eco FORCE
USA

LINDHAUS®
QUALITY CLEANING EQUIPMENT



VIA BELGIO, 22 Z.I. - 35127 PADOVA - ITALY

Ph. +39 049 8700307 - Fax +39 049 8700605

e-mail: vacuum@lindhaus.it - www.lindhaus.it

Cod.Fiscale - P.IVA - Reg.Imp.PD 02151740285

Capitale Sociale 46.800,00 i.v.

LINDHAUS U.S.A.

P.O. BOX 159 / 12941 EAGLE CREEK PARKWAY
SAVAGE, MN 55378

www.lindhaususa.com

www.lindhaus.net

info@lindhaus.com

1-800-498-7526 / 952-707-1131

FAX: 952-707-1134

PARTS LIST

EFFECTIVE FROM

DATE

PAGE

01/06/2015

1/2

HEALTH CARE PRO ECO FORCE - BODY

MODEL: 031207 (HCP 12") / 031407 (HCP 14")

Pos	Part Number	Description
1	080173681	BAG HOUSING COVER WHITE
2	085610009A	SCREW 2,9x16 (SINGLE)
3	100093001	GRILL FILTER HOLDER RED
4	082720181	BAG DOOR LATCH+SPRING GREY
5_	015230316	INTERNAL FILTER
5_	,087170081	CARBON ACTIVE FILTERS (5 PACK)
6	084370081	BAG ENTRANCE WITH SAFETY SUPPORT
7	084520081	HANDLE BUTTON ASSEMBLY 2 POSITION
8_	031740310	ROUND DUSTING BRUSH WITH NATURAL BRISTLES (D.38mm 1-1/2") [STANDARD]
8_	,031110300	UPHOLSTERY TOOL WITH NATURAL BRISTLE [COMPLETE] (D.38mm 1-1/2")
8A_	,030900300	UPHOLSTERY TOOL, NATURAL BRISTLE BRUSH [ONLY]
8_	,030820300	UPHOLSTERY TOOL WITH CENTER STRIP [COMPLETE] (D.38mm 1-1/2")
8B_	,030740300	UPHOLSTERY TOOL, BLACK CENTER STRIP BRUSH [ONLY]
9	001830105	ROUND DUSTING BRUSH SUPPORT
10	089233681	BAG HOUSING WHITE
13	010260307	O-RING
14_	181460381	EXTENSION HOSE WITH HANDLE GRIP ECO FORCE (D.38mm 1-1/2")
14A_	183380381	HANDLE GRIP KIT FOR EXTENSION HOSE ECO FORCE (D.38mm 1-1/2") (3 PCS)
14_	,030860300	EXTENSION HOSE 3-1 WITH SLEEVES (CUFF TO CUFF) (D.38mm 1-1/2")
14B_	,030040310	HOSE SLEEVE (CUFF) FOR EXTENSION HOSE (D.38mm 1-1/2")
15	002730104	WAND CLIP
16	001950110	UPPER HOOK FOR FLEXIBLE HOSE
17	080772581	HANDLE GRIP RED
18	002870105	RETAINER
19	084590081	CHROMATE TUBE - 2 POSITION WITH BUTTON LOCK
21	084412581	HANDLE TUBE ASSEMBLY 2 POSITION
22	181473680	ELECTRIC SYSTEM ASSY Hpro eco FORCE WHITE V.120/60 3 WAY
23	021950320	CORD 2x17 10.7 MT. USA PLUG BLACK (2 PRONG / 35FT)
24	000460307	STRAIN RELIEF D.6 V.100/230/240
25	000070305	CORD CLAMP
26	024590000	VACUUM SENSOR
27	084580081	SAFETY SUPPORT KIT (4 PCS)
28	024660000	MAIN SWITCH
29	004610835	RED LENS
31	100022501	HOOK CENTRAL HANDLE RED
32	181833681	COVER HANDLE
33	009170101	CONTACT COVER
34	009160101	CONTACT HOUSING
35	100010301	FRAME HANDLE

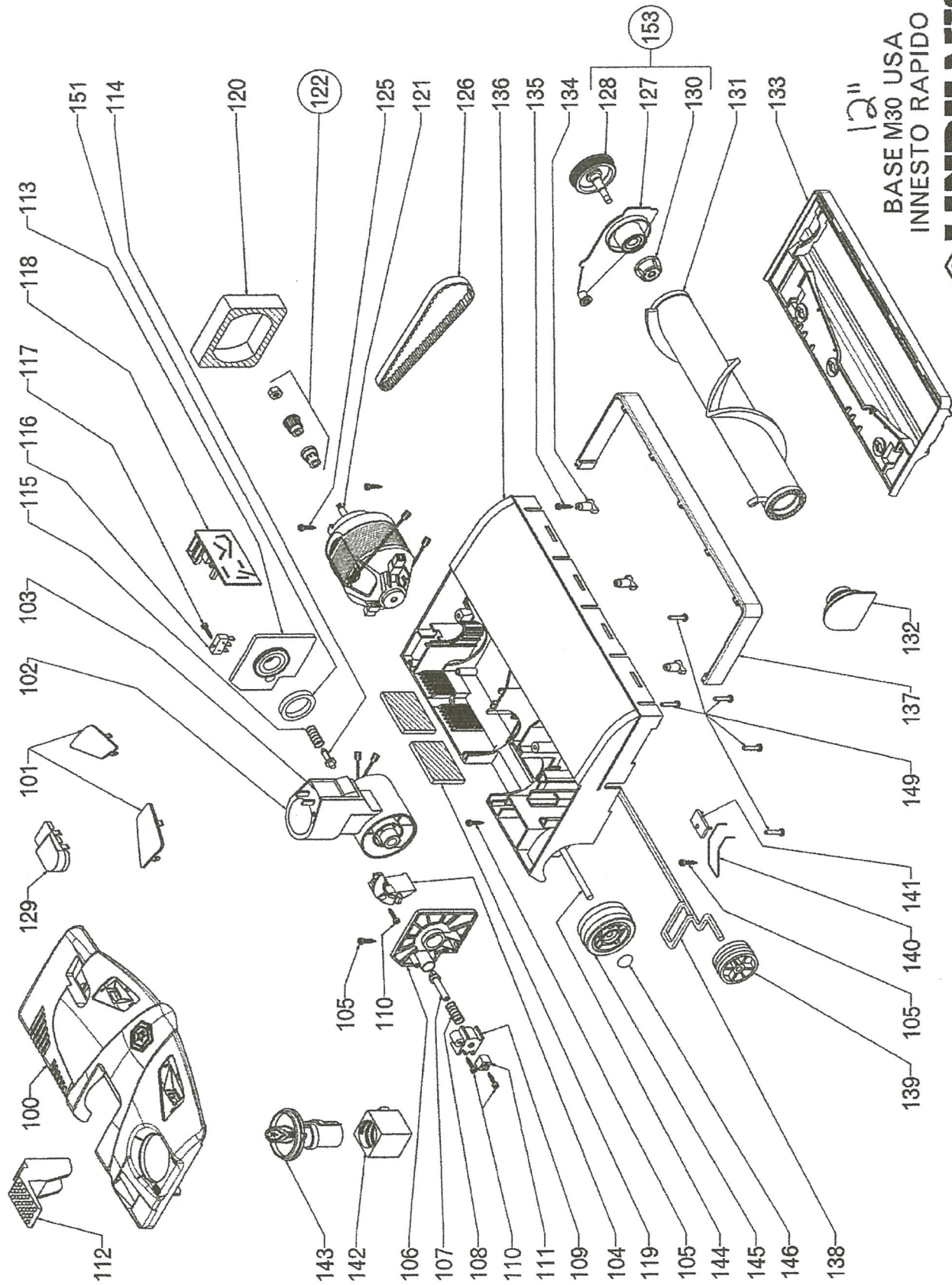
36	010200016	FOAM FILTER
37	000200308	GASKET
38	020040400	TERMINAL BLOCK 2 POLES
39	011790016	FOAM MOTOR FILTER
40	007940308	MOTOR GASKET, MOTOR
41	181522581	BOTTON COVER KIT RED (1 PC)
42	003360100	EXHAUST GRILL
43_	085350081	EXHAUST MICROFILTER (12 PACK) [HF6/VAL/HCP/RX/CHP/ACT/DYN/DIA/LB4]
43_	030640000	HEPA FILTER
43_	,030650000	CARBON ACTIVE EXHAUST FILTER
45	004601701	SWITCH BUTTON
46	085550009A	SCREW 3.5x25 (SINGLE)
47	087250009A	SCREW 3.5x22 (SINGLE)
48	180680009A	SCREW 3.5x57 (SINGLE)
49	003303601	MOTOR HOUSING WHITE
50	011810307	O-RING 31x43
51	181650081	CURVE SUPPORT
52	003410105	UPPER CURVE
53	010270307	O RING
54	083683681	INNER VACUUM MOTOR HOUSING WHITE
55	003330133	HOSE INLET
56	180830080	CORD CLAMP WITH ELECTRONIC 3 WIRES V.230/240
57_	051350080	VACUUM MOTOR R26APSS (HE) V.120/60 W.750
57A_	022290000	CARBON BRUSH R26 (SET OF TWO)
57B_	,022200000	THERMAL PROTECTOR
58	010220016	FOAM FILTER
59	030060310	CREVICE TOOL (D.38mm 1-1/2")
60	032350300	TELESCOPIC WAND
61	009180003	4 CONTACT HOUSING COVER
62	009190003	4 CONTACT HOUSING
63	021050300	MAIN SWITCH
64	086440009A	SCREW 3.5x19 (SINGLE)
65	085560009A	SCREW 3.9x16 (SINGLE)
66	087050009A	SCREW 3.5x16 (SINGLE)
67	180670009A	WASHER D.4 (SINGLE)
68	009892501	BUTTON RED
69	012980009	HANDLE SPRING
	_030610019	PH4 BAGS (10 BAGS + 2 MICROFILTERS)
	_080070081	HOSE CRUSHPROOF 5 FT (D.38mm 1-1/2")
	_086700081	HOSE CRUSHPROOF 9 FT (D.38mm 1-1/2")
	_030850310	EXTENSION TUBE (D.38mm 1-1/2")

HARD FLOOR ATTACHMENTS TO MAKE HEALTH CARE PRO INTO ELECTRIC BROOM

_088753681	HARD FLOOR TOOL LOCKING / WHEELED [COMPLETE]
_088760081	FELT PAD CLIP ON ATTACHMENT FOR HARD FLOOR TOOL LOCKING

ATTACHMENTS TO MAKE HEALTH CARE PRO INTO ELECTRIC BACKPACK / BLOWER

_083540100	BLOWER PORT [ACCESSORY TO CONVERT INTO BLOWER]
_086750000	BACKPACK STRAP / HARNESS
_031400300	BACKPACK ACCESSORY BAG
_031410300	BACKPACK PAD WITH BELT



12"

BASE M30 USA
INNESTO RAPIDO

LINDHAUS®
QUALITY CLEANING EQUIPMENT



VIA BELGIO, 22 Z.I. - 35127 PADOVA - ITALY

Ph. +39 049 8700307 - Fax +39 049 8700605

e-mail: vacuum@lindhaus.it - www.lindhaus.it

Cod.Fiscale - P.IVA - Reg.Imp.PD 02151740285

Capitale Sociale 46.800,00 i.v.

LINDHAUS U.S.A.

P.O. BOX 159 / 12941 EAGLE CREEK PARKWAY
SAVAGE, MN 55378

www.lindhaususa.com

www.lindhaus.net

info@lindhaus.com

1-800-498-7526 / 952-707-1131

FAX: 952-707-1134

PARTS LIST

EFFECTIVE FROM

DATE

PAGE

01/06/2015

1/2

HEALTH CARE PRO ECO FORCE - POWER BRUSH 12"-14"

MODEL: 031207 (HCP 12") / 031407 (HCP 14")

Pos	Part Number	Description
100_	181843681	BASE HOUSING COVER WHITE
100A_	,085150081	THROAT COVER WITH SPRING, FELT STRIP
100B_	,011000017	THROAT COVER FELT STRIP [ONLY]
101_	,083950081	LENS SET RED AND GREEN [STANDARD]
101_	181172581	LENS SET LED RED
102_	,084170380	JOINT COMPLETE DOMESTIC 2 WIRE
103_	083940080	JOINT KIT (BUTTON+FAST+GUIDE+COVER) (1 PC)
104_	002280305	JOINT PIN SLIDE
105_	085590009A	SCREW 3.9x13 (SINGLE)
106_	080430381	SUPPORT RIGHT JOINT
107_	000840036	PLUNGER
108_	010390009	SPRING, DÉTENTE
109_	000650036	BUSHING
110_	085610009A	SCREW 2.9x16 (SINGLE)
111_	000970305	SLIDE
112_	001920105	FOOT PEDAL DARK GRAY
113_	080440381	SUPPORT LEFT JOINT
114_	000670036	SWITCH ACTIVATOR PIN
115_	010480009	SPRING SWITCH ACTIVATOR PIN
116_	020640000	MICROSWITCH
117_	086950009A	SCREW 2.2x16 (SINGLE)
118_	,020610000	CIRCUIT BOARD M30 (12")
118_	020370000	CIRCUIT BOARD M38 (14") RX 100/120V W.170
119_	010720316	EXHAUST FILTER
120_	010580016	FILTER BRUSH MOTOR
121_	050030080	BRUSH MOTOR 100/120V (12"-14")
121A_	021260000	CARBON BRUSH FOR BRUSH MOTOR R73 (SET OF TWO)
121B_	,015210009	NUT M5, BRUSH MOTOR
122_	182730081	PINION+NUT COMPLETE
125_	085560009A	SCREW 3.9x16 (SINGLE)
126_	010790300	TIMING BELT 7mm
127_	181570029	TRANSMISSION SUPPORT WITH BEARINGS
128_	060290081	PULLEY WITH SHAFT
129_	009044146	SIDE LIGHT COVER
130_	088620081	DRIVE JOINT BASE
131_	009610301	BRUSH ROLLER M30 (12") 2 BRISTLE 0,25 BLACK + INSERT [STANDARD]
131_	,009590301	BRUSH ROLLER M30 (12") 1 BRISTLE 0,25 BLACK + INSERT
131_	100110101	BRUSH ROLLER M30 (12") 1 BRISTLE WHITE (SOFT BRISTLE) + INSERT
131_	,009600301	BRUSH ROLLER M30 (12") 1 BRISTLE RED (STIFF BRISTLE) + INSERT

131_	009630301	BRUSH ROLLER M38 (14") 1 BRISTLE 0,25 BLACK + INSERT [STANDARD]
131_	,009620301	BRUSH ROLLER M38 (14") 1 BRISTLE WHITE (SOFT BRISTLE) + INSERT
131_	,009640301	BRUSH ROLLER M38 (14") 1 BRISTLE RED (STIFF BRISTLE) + INSERT
131A_	,100370004	INSERT, WHITE (MODIFY BRUSH ROLL TO ECO FORCE)
132_	181670029	ROLLER SUPPORT M30 (12")
132_	181580029	ROLLER SUPPORT M38 (14")
133_	005860333	BRUSH SHOE PLATE M30 (12")
133_	005870333	BRUSH SHOE PLATE M38 (14")
134	087491381A	ROLLER COVER CLIP (SINGLE)
135	085540009A	SCREW 3.5x9.5 TG (SINGLE)
136_	087563681	BASE HOUSING MARBLE WHITE M30 (12")
136_	181663681	BASE HOSUING MARBLE WHITE M38 (14")
137_	000600112	BUMPER M30 (12") DARK GRAY
137_	000590112	BUMPER M38 (14") DARK GRAY
138	011320029	FRONT AXLE
139	002260000	FRONT WHEEL RUBBER
140	010430009	SPRING (AXLE)
141	000680036	SPRING STOP PLATE
142	000990305	BRUSH HEIGHT ADJUSTER
143	003750104	ADJUSTING KNOB DARK GREY
144	011380009	REAR AXLE
145	002270000	REAR BIG WHEEL RUBBER
146	012840009	WHEEL RETAINER CAP
149	086440009A	SCREW 3.5x19 (SINGLE)
151	010980017	FELT RING
153	181590029	TRANSMISSION SUPPORT [COMPLETE]
	,003243001	DCS (DEEP CLEANING SYSTEM) CONVERTER
PBR	190633680	HEALTH CARE PRO M30-PB (12") POWER BRUSH REPLACEMENT ECO FORCE [COMPLETE]
PBR	190643680	HEALTH CARE PRO M38-PB (14") POWER BRUSH REPLACEMENT ECO FORCE [COMPLETE]

ENCAPSULATION IS LOW MOISTURE CARPET CLEANING METHOD / USE VACUUM WITH DCS CONVERTER

CHE-7000	PURE POWER / OXY-GEN - 12 QUARTS (ENCAPSULATION CARPET CLEANER)
MIS-7200	2 LITER – ALL ANGLE SPRAYER BOTTLE (DILUTE / APPLY CLEANERS)